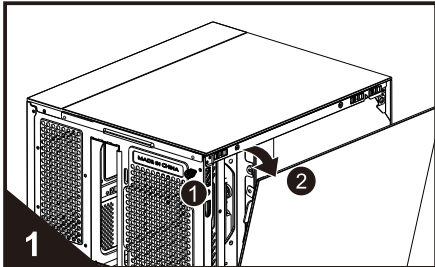
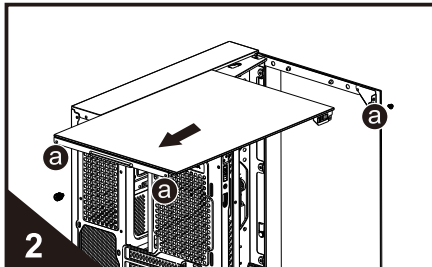




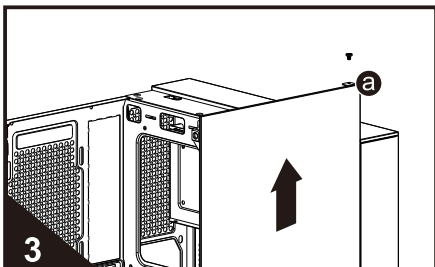
### 1 Disassembly of left glass, top glass, front glass and right side panel.



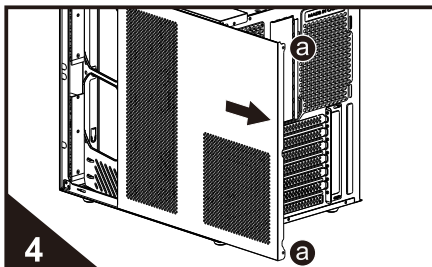
Unscrew the screw on rear panel which secured left glass, push the left glass outward according to the arrow direction as shown in the illustration to disassemble it.



Unscrew the 3 screws of "a" positions, then push the top glass backward according to the arrow direction to disassemble it.



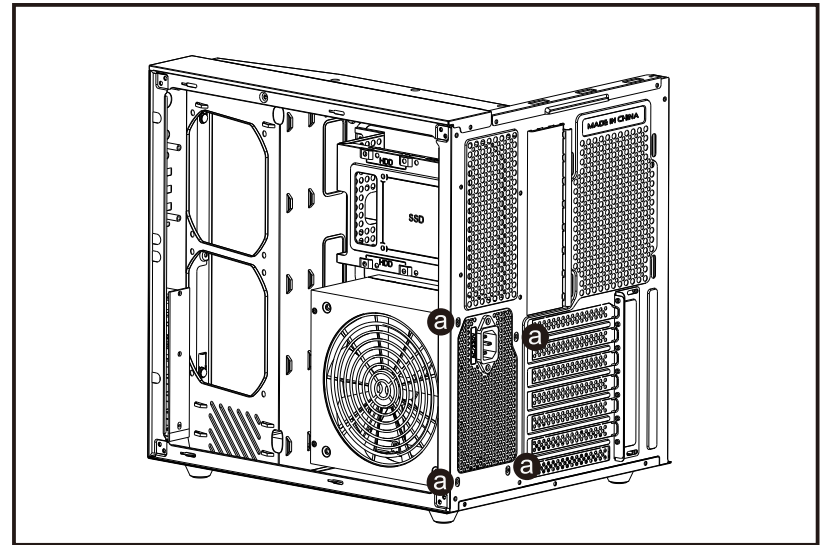
Unscrew the screw of "a" position, then take the front glass upward according to arrow direction to disassemble it.



Unscrew the screw of "a" position then slide out right side panel backward to disassemble it.

### 2 PSU installation (support ATX PSU)

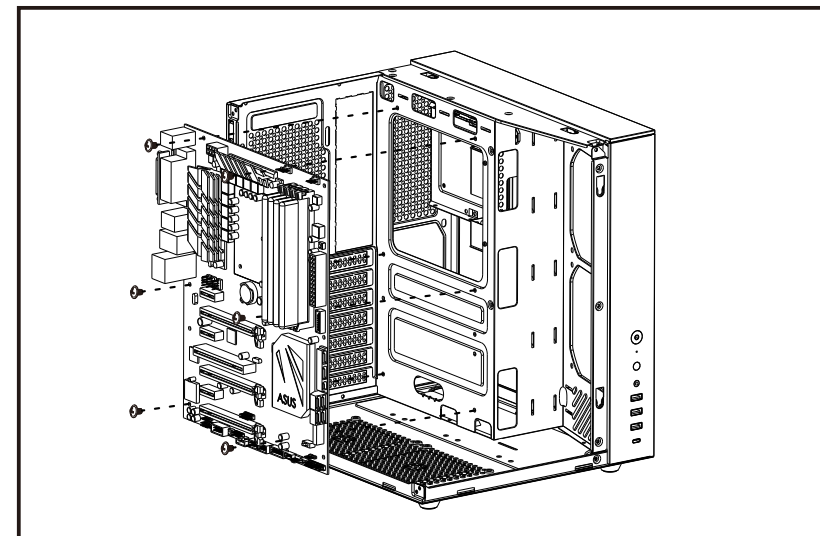
Install PSU in the position as shown in the illustration, Then secure it by 4 screws at "a" positions.



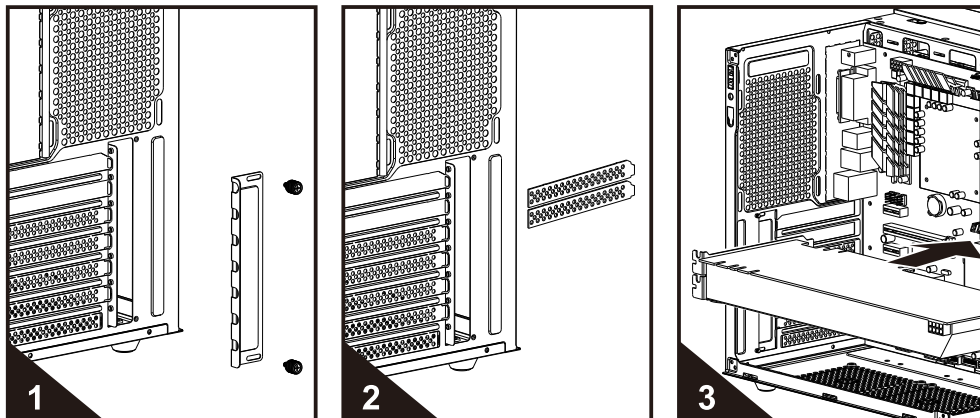
### 3 M/B installation

Put M/B in the case and align the screw holes, then fix M/B by screws as shown in the illustration (this case support ATX/micro ATX/ITX M/B).

(different M/B has different installation characteristics, please refer to the user manual of your M/B before installation.)



## 4 VGA card installation



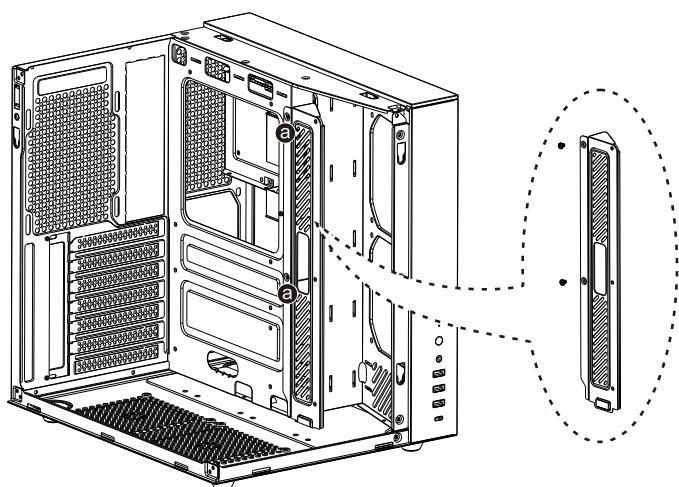
Unscrew the screws of the fastening bar of the PCI slot covers, remove the fastening bar.

Break off PCI slot covers of the corresponding positions.

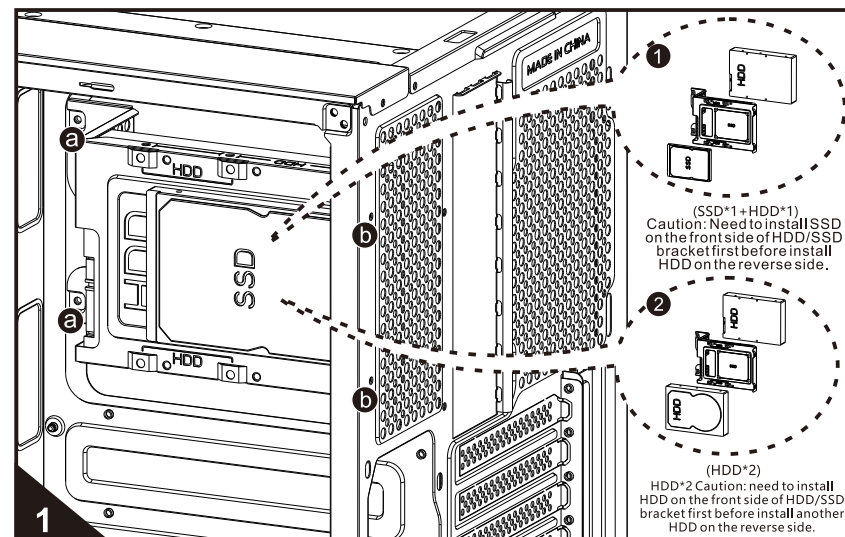
Insert VGA card into the slot of M/B according to the arrow direction; Then secure it by screws.

## 5 Installation of M/B auxiliary metal piece

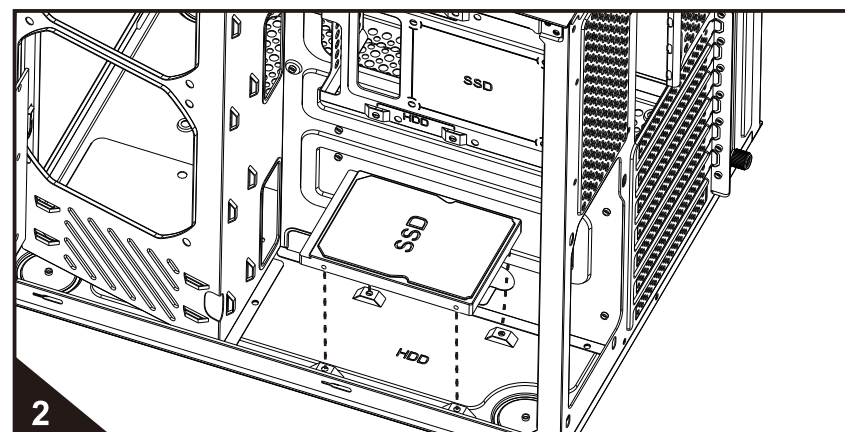
Install M/B auxiliary metal piece to the position as shown in the illustration, then fix it by 2 screws at "a" positions.  
(Note: no need to install this auxiliary metal piece if M/B width is no more than 200mm)



## 6 HDD/SSD installation (support HDD\*1+SSD\*2 or HDD\*2+SDD\*1)



- ① Unscrew the screws of positions "a" and positions "b" of HDD/SSD bracket.
- ② Install 1\*HDD+1\*SSD (figure 1) or 2\*HDD (figure 2 ) on the bracket.
- ③ Put HDD/SSD bracket to the position as shown in the illustration, secure it by screws at positions "a" and positions "b".



Put 2.5"SSD\*1 on the bottom panel, align screw holes then fix it by screws from the bottom.

## 7 Cooling device compatible

M/B bracket: 2\*12cm fan or 240mm water cooling kit.  
Bottom panel: 2\*12cm fan  
Rear panel: 1\*12cm fan